

## S01.1 Label Acoustic Zones

### Technical Document

WELL Building Standard™ version 2 (WELL v2™), Q4 2022 addenda



#### HOW TO USE THIS DOCUMENT:

This document is intended to serve as a guide on how to create a project **technical document to incorporate strategic planning required to prevent issues of acoustic disturbance from various sources of noise.**

This document is meant to demonstrate an acceptable degree of detail for

- precertification documentation submission
- documentation submission

#### *For precertification documentation submission:*

To achieve WELL Precertification, project teams may submit intent-stage or implementation-stage documents for pursued features, or any combination of the two. An intent-stage document is typically a draft document that has not yet been implemented in the actual project, while implementation-stage documents describe final and implemented strategies. Intent and implementation-stage documents should be similar in terms of level of detail. For final WELL Certification documentation approval, all documents are required to be implementation -stage. To learn more about intent-stage vs. implementation-stage documentation, review the [precertification guide](#) in our knowledge base.

Intent-stage language is indicated in this sample document with **green text and in parentheses**. For intent-stage architectural drawings, if the project is still in design, the drawings do not need to be final. This document cannot simply state that the feature requirements will be implemented; the documentation should include adequate detail such that a WELL Reviewer will be able to confirm the document complies with all of the WELL feature part requirements.

#### *For documentation submission:*

The level of detail is up to the discretion of the project team, but the documents must include specific details demonstrating that the actual requirements have been enacted in the project boundary. The Feature cannot be demonstrated solely through a confirmation that the requirements have been or will be implemented.

This document and similar tools are intended to assist projects in their pursuit of WELL v2 but use of this document and/or similar tools are in no way a guarantee of achievement of any rating, certification or other designation, and no representation or warranty is made regarding the likelihood of achieving any rating, certification or other designation, and IWBI shall have no liability resulting from the use or content of this document or similar tools or resources or from any action taken or inaction occurring in reliance on this document or similar tools or resources.

Note: The below document is based on the Q4 202 addenda of the WELL Building Standard™ version 2 (WELL v2™). Project teams are required to implement the feature requirements from the addenda version assigned to their project or any more recent addenda version.

## FEATURE PART REQUIREMENTS:

### *For All Spaces*

*The project meets the following requirements*

- a. A floor plan or other design document is made available to occupants showing the following acoustic zones throughout the project:*
  - 1. Loud zones: includes areas intended for loud equipment or activities (e.g., mechanical rooms, kitchens, fitness rooms, social spaces, recreational rooms, music rooms)*
  - 2. Quiet zones: includes areas intended for concentration, wellness, rest, study and/or privacy (e.g., restorative spaces, lactation rooms, nap rooms).*
  - 3. Mixed zones: includes areas intended for learning, collaboration and/or presentation (e.g., auditoriums, classrooms, breakout spaces).*
  - 4. Circulation zones: includes occupiable areas not intended for regular occupancy (e.g., hallways, egress, atria, stairs, lobbies).*
- b. A plan for reprogramming or mitigating sound transmission between loud zones that border quiet zones (if any).*

### WELL Core Guidance:

Meet these requirements in the whole building, based on any knowledge of anticipated uses.

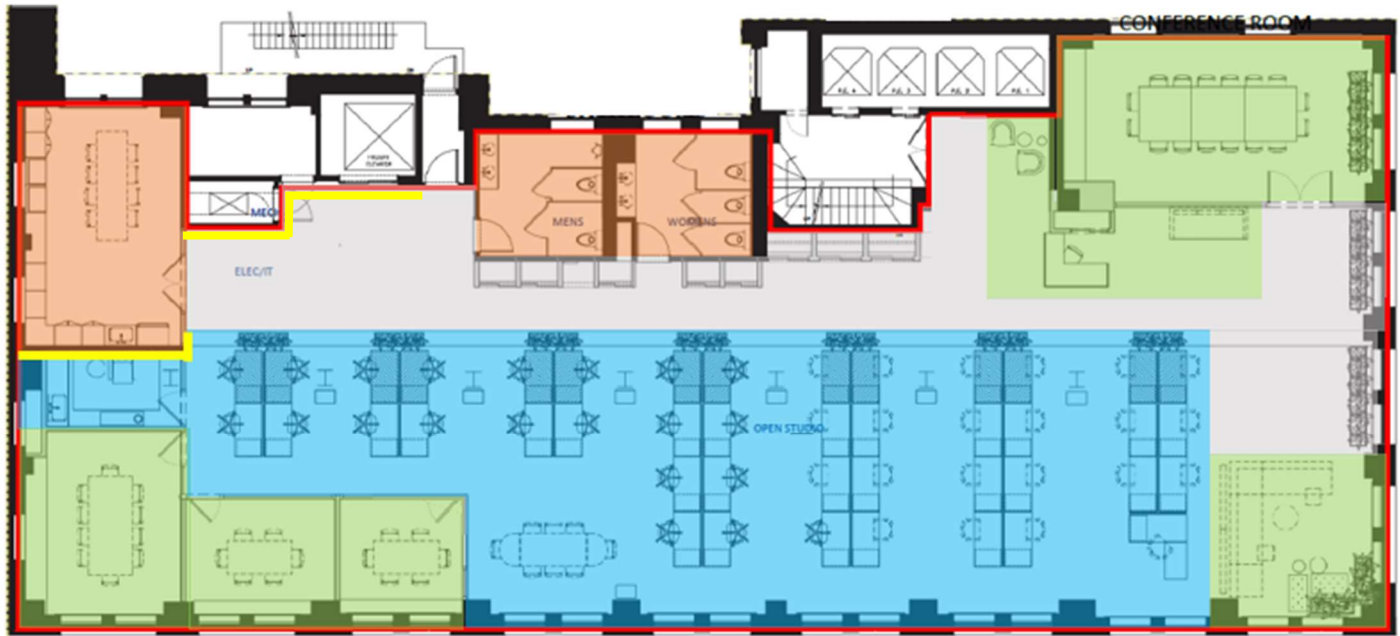


The below sample documentation is intended to provide guidance in creating a technical document for labeling acoustic zones. It is not a template. You may note included components that are not required to demonstrate compliance with this Feature.

### Example document for Feature S01 Part 1 a and b

## S01.1 Label Acoustic Zones

- Loud Zones
- Quiet Zones
- Mixed Zones
- Circulation Zones
- Project Boundary
- Loud Zone next to Quiet Zone



### Part 1.b Plan for Mitigating Sound Transmission between Loud Zones and Quiet Zones:

There are Loud Zones (e.g., kitchen with social space for eating, mechanical and IDF rooms) adjacent to Quiet Zones (wellness room and quiet open office space). It was not possible to reprogram the space in this existing interiors project, so the following strategies have been implemented (*intent-stage: will be implemented*) to mitigate sound transmission:

- ✓ The wall highlighted in yellow in the annotated architectural drawing above has a sound transmission class (STC) of 60 (as recommended in WELL S03 Part 1: Design for Sound Isolation at Walls and Doors.)
- ✓ The doors to the kitchen have the following attributes to mitigate sound transmission:
  - Self-closing
  - Non-hollow core
  - STC of 30
  - Seals at the head, jamb and base

### TIPS FOR MULTIPLE LOCATIONS

- Organizations participating in WELL at scale should indicate which locations are pursuing this feature, and then submit the specific details for the locations selected for an audit.